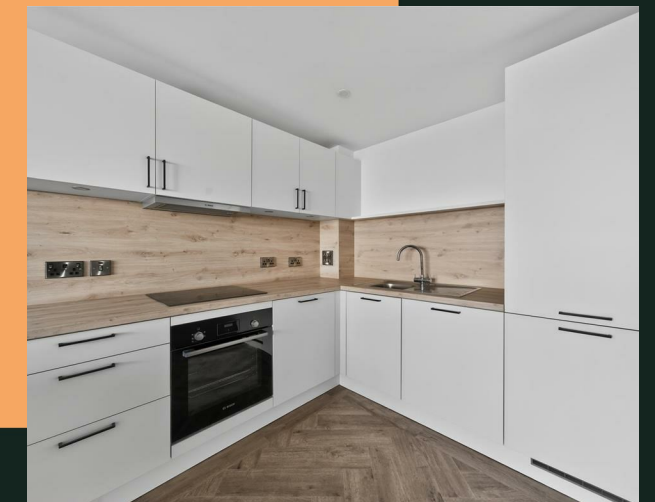
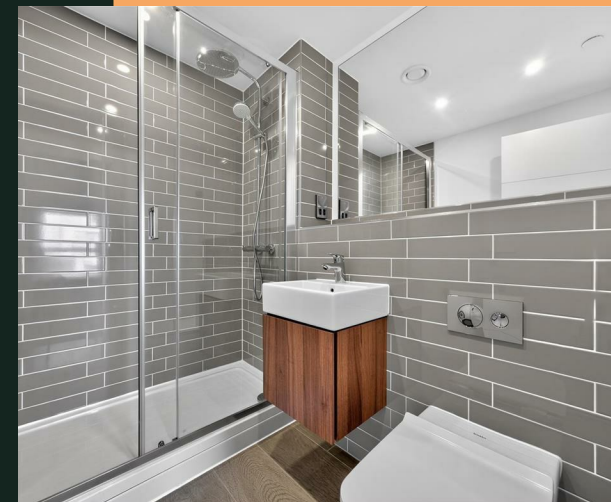


# Upper Gough Street, B1

PROPERTY ADDRESS  
Apartment 43  
56 Upper Gough Street  
Birmingham  
B1 1GF

Energy Efficiency Rating		Current	Potential
Very energy efficient - lower running costs			
(92 plus) <b>A</b>		91	91
(81-91) <b>B</b>			
(69-80) <b>C</b>			
(55-68) <b>D</b>			
(39-54) <b>E</b>			
(21-38) <b>F</b>			
(1-20) <b>G</b>			
Not energy efficient - higher running costs			
<b>England &amp; Wales</b>	EU Directive 2002/91/EC		



Call Us  
01215162222

Email Us  
solihull@vision-properties.co.uk

**vision**

We look at  
estate agency  
differently.

**vision**

- Total cost of first month: £2,800 (rent & deposit)
- Brand new
- Communal roof garden
- Landscaped courtyards
- Great central location

Be the first to rent this stunning new build apartment. The property comes furnished and benefits from high spec fixtures and fittings throughout.

It briefly comprises of a bright and airy open plan living, dining and kitchen area with stylish integrated appliances, two bedrooms (one with an ensuite) and a main bathroom.

Residents have access to the communal lounge, two attractive internal courtyards and a rooftop garden with fantastic city scape views. The development also benefits from a lift and secure video-entry phone system.

Chapmans Yard is located right in the heart of Birmingham city centre, with everything you need on the doorstep, including the Mailbox, the Cube, Centenary Square, Grand Central and New Street stations.

Available now subject to acceptable references.

Rent: £1,300 per calendar month  
Holding deposit: £300  
Deposit: £1,500

Please note that some of the photos have been enhanced using CGIs for illustrative purposes. Photos are representative of the development.

